

MOYA

L I V I N G



INDOOR & OUTDOOR COLLECTION PORTFOLIO

- Sustainable, buy once, last a lifetime
- Environmental, never end up in a landfill
- Hypoallergenic, no off-gassing
- Endless colors and textures
- Designed and built in California
- Honest utility - Interchangeable cabinets
- Timeless design + elegance



ABOUT US

Moya O'Neill, of Moya Living, has set a course for dynamic creation and bold design above all else. Her confidence in using color and her true fascination and passion for stepping outside the box is what has catapulted her into her position as one of the most successful female entrepreneurs in Orange County.

No detail too great or too small is the motto at Moya Living. Combining color with function is an art that Moya and her team love to create in their cabinetry design.

Stainless Steel Cabinetry by Moya Living provides clients with a piece of furniture that clients can enjoy for years to come with long term performance and resilience unmatched in the industry.

She has a unique ability to draw out each person's sense of style, combined with the ability to embrace timeless elegance with baked-on powder coated colors, bursting with originality and creativity, whether it be a bathroom vanity, outdoor grill space, or an entire kitchen.

Taken from the Moya Living editorial in Blue Door Magazine, written by Annette Reeves on March 10, 2021



6 KITCHEN

20 LAUNDRY/GARAGE

24 OUTDOOR KITCHEN

30 HOSPITALITY/COMMERCIAL

36 BATH



Premier designer + manufacturer of luxe hand-crafted powder coated steel cabinetry.



Moya Living + Event Center adjacent to our manufacturing facility.
Located in Orange County, California.





This Laguna Beach Village home by local architect Anders Lasater features white powder coated steel cabinetry complimented with stainless steel recessed pulls





A designers own home. A unique and magnificent marriage of materials consisting of baked-on power coated black steel cabinets with a wood embellished island. The Lacanche Range is the anchor for this fearless kitchen.









440 Atlantic project.
The architect and developer delivered the proper aesthetic on this 8 unit project in Brooklyn. The vision was a European feel with the steel cabinet colors matching the building's steel beams. Elegant and industrial.

UPPER WEST SIDE, NYC



The iconic NYC Dakota building built in 1890.

The Dakota kitchen features custom engineered stainless steel plate upper cabinetry with glass doors. Classic white cabinets with marble tops and mosaic floor complement the black Lacanche stove.



BOISE, ID



Moya Livings first kitchen project for a food photographer's studio shown here in our Pretentious Red. Chunky glass doors on the tall cabinets allow easy access and viability.



This 1932 Laguna Beach cottage paired with a vintage restored O'Keeffe and Merritt stove show how steel cabinetry works easily in different types of interior design genres.

TELLURIDE, CO



Architect's 1890's cabin restored and the Moya Living steel cabinets add an unexpected surprise.

THE BUTLER



The Butler features a built-in 2-drawer refrigerator, pantry pullout and hidden drawers.









Pristine and clean Moya Living Cabinetry is perfect + utilitarian for the laundry room. Wallpaper by Diana Garreau, sink by Linkasink with Miele stackable washer and dryer.



Luxurious laundry room - beautiful Jet Black cabinets with Polar White uppers add for a striking contrast for our Houston, Texas client.



Custom made to order cabinetry with a baked-on powder coat finish in our Pretentious Red. A stunning car lovers dream garage.





Outdoor cabinetry for entertainers home in Laguna Beach, California.
Shown is a baked on power coat on stainless steel in Jet Black.



Outdoor living with matching Bentley Blue cabinetry + vent hood at this San Clemente, California home.





This gorgeous Emerald Bay home is a detailed example of how Moya Living works in tandem to match the exterior railing and compliment the interior kitchen.

LAGUNA BEACH, CA





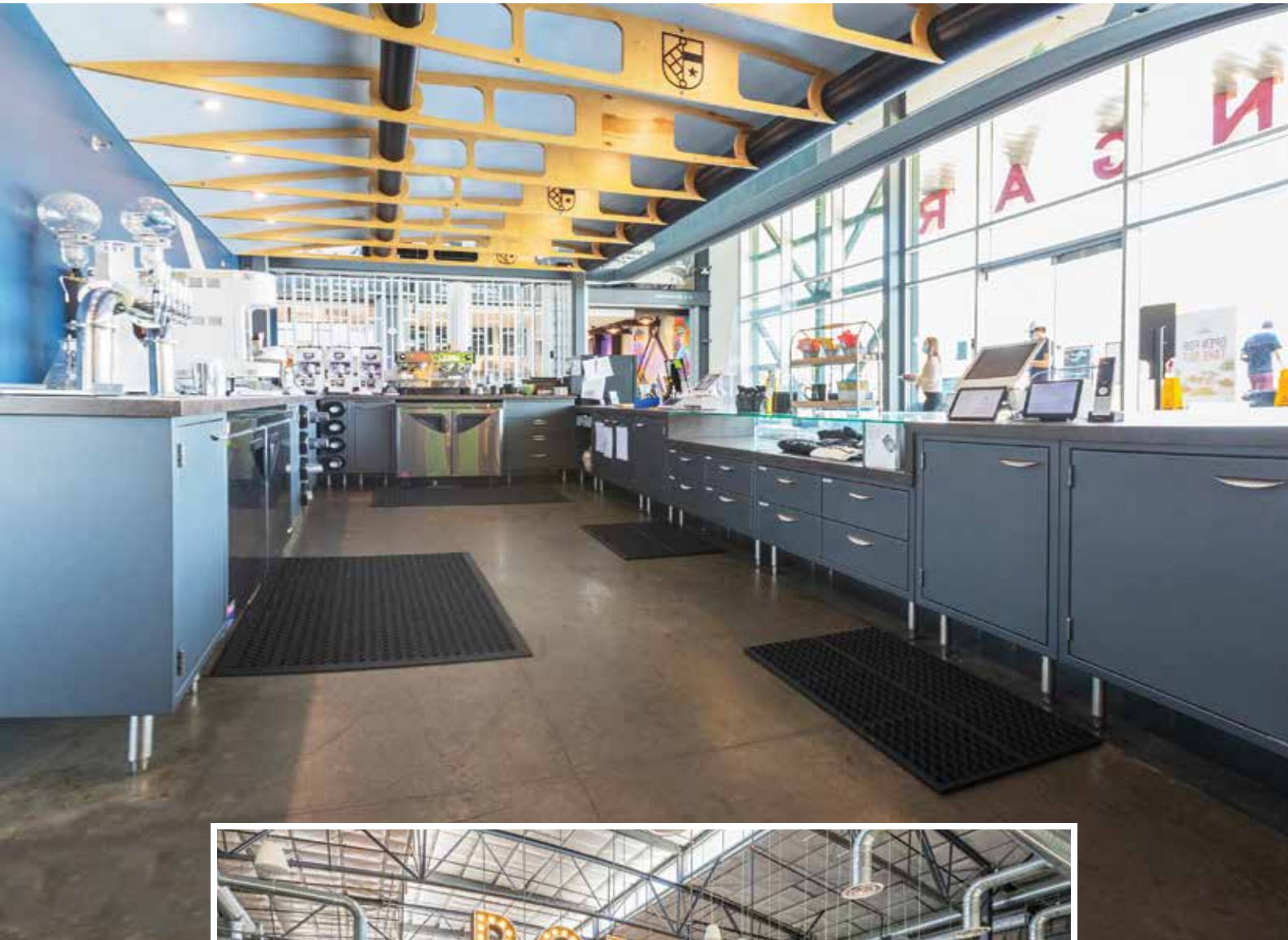
RANCHO MIRAGE, CA







Hardworking cabinets are a must for the busy workforce at Portola Coffee Roasters. Custom textured dark silver cabinets on 6" stainless steel legs. Built to last.





Inside the Travis Matthew Headquarters, a custom made executive conference table and desk sit with drawers that pull out, enabling merchandise to be displayed in style beneath the glass.

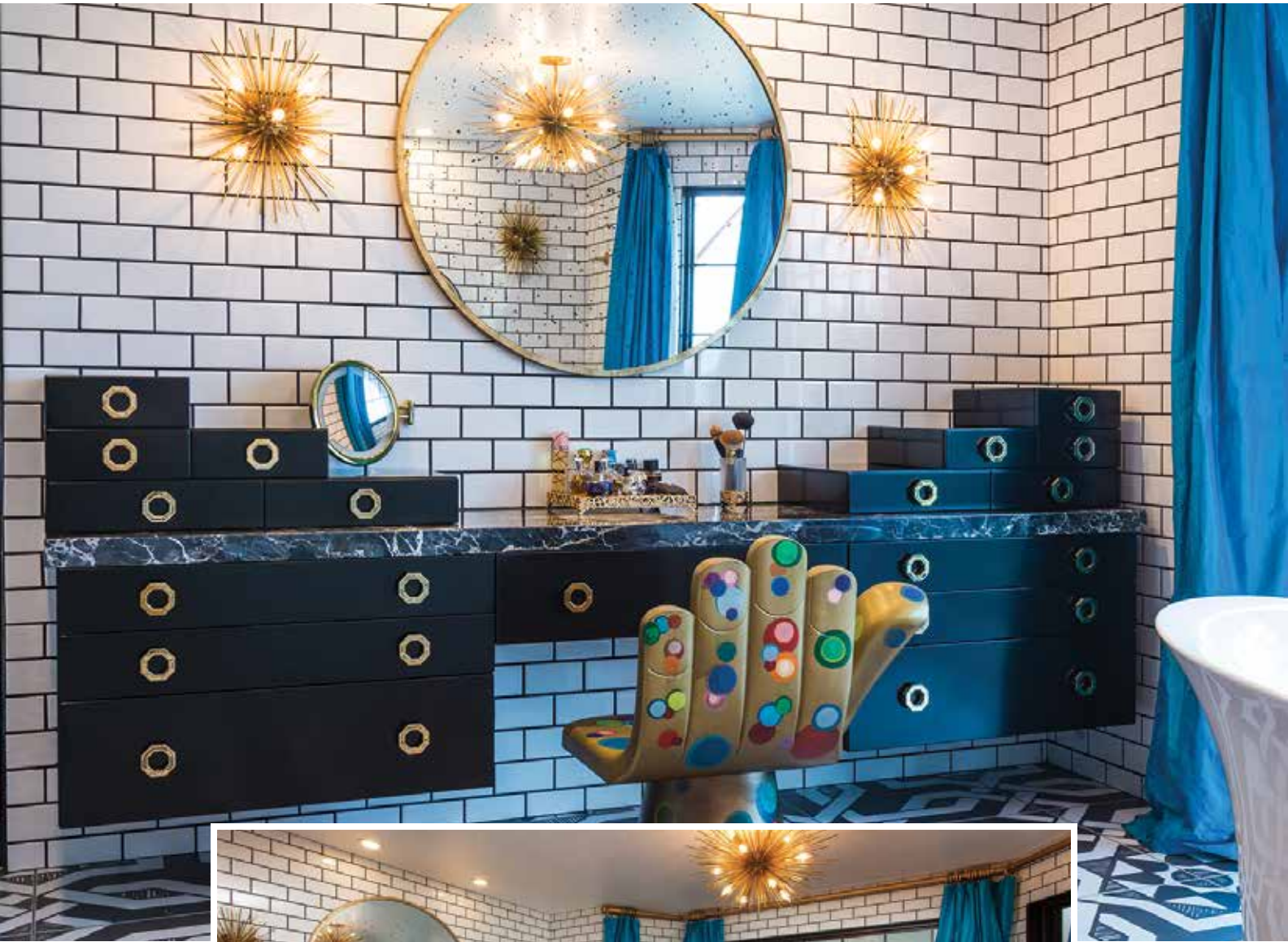
The base of the conference table was designed to emulate the Travis Matthew logo. 



A custom brown powder coat with gold flecks was developed for this project. Palm Springs Orange provided the contrast.



Sleek 2 drawer powder coated Polar White vanity is a nice contrast with the black subway tiles and custom wallpaper.





Straight Line drawer sets can be combined and arranged to suit the home owner's exact requirements. Each set is now available in birch or walnut.

THE MOYA LIVING DIFFERENCE



BAKED-ON POWDER COAT
Colors are available in low gloss, gloss and fine texture.

ENTIRE CABINET BODY MADE OF STEEL







SHOWROOM NOW OPEN
Schedule your appointment today.



Moya Living
800.545.8816 p 714.545.1838 f 714.641.0496
17430 Mt. Cliffwood Circle, Fountain Valley, CA 92708
www.moyaliving.com
V17

**WOMEN[™]
OWNED**

