

# GENIE

S C I E N T I F I C

— SINCE 1976 —

## PORTFOLIO



FUME HOODS / LAB FURNITURE

DEALER

MANUFACTURER

INNOVATOR

# GENIE SCIENTIFIC

Building and installing fume hoods and lab furniture since 1976.  
Whether you need to build a multi-million dollar facility  
or purchase a single fume hood, we are here to serve.

- **Design**
- **Manufacturing**
- **O.E.M. Procurement**
- **Installation**

**800-545-8816**

**Ship & Install Nationwide**



MADE IN THE USA



## What We Provide

- Fume Hoods
  - Bench Top Fume Hoods
  - Floor Mounted (Walk-in) Fume Hoods
  - Custom Fume Hoods and Ventilated Enclosures
- Powder Coated Steel Casework
  - Steel Lab Casework
  - Mobile Cabinets
  - Lab Tables
  - Flexible & Modular Workstations
- Countertops Shelving & Accessories
  - Chairs
  - Countertops
  - Shelving
  - Lab Fixtures



**GENIE**  
SCIENTIFIC



COMPRESSED  
AIR



ARGON



NITROGEN



VACUUM



115V  
20A

115V  
20A







SAFETY INFORMATION  
Read the Safety Data Sheet (SDS) for all chemicals used in the hood.  
Wear appropriate personal protective equipment (PPE) at all times.  
Do not eat, drink, or use open flames in the hood.  
Keep the hood sash at the recommended height.  
Do not store chemicals in the hood.  
Report any spills or accidents immediately to the appropriate personnel.

COMPRESSED AIR

ARGON

NITROGEN

VACUUM

WATCH AIR TO AVOID RESPIRATORY IRRITATION

FLAMMABLE  
KEEP FIRE AWAY

CORROSIVE



TriLink BioTechnology specializes in the synthesis of highly modified nucleic acids constructs for research, diagnostic and therapeutic applications.



TriLink's new lab located in San Diego, CA. TriLink has been a Genie client since their inception in 1996. Walk in and bench top exhaust hoods with tables and lab furniture finish this spectacular lab space.









Tables offer mobility for today and the future combined with mobile cabinets.





Floor mount/ walk in and bench top exhaust fume hoods. Timeless lab design.









Built in lab steel lab furniture with acid resistant phenolic resin tops.  
Serious lab work completed here.







Teaching exhaust hoods and a working science lab provide students with real life practicality.

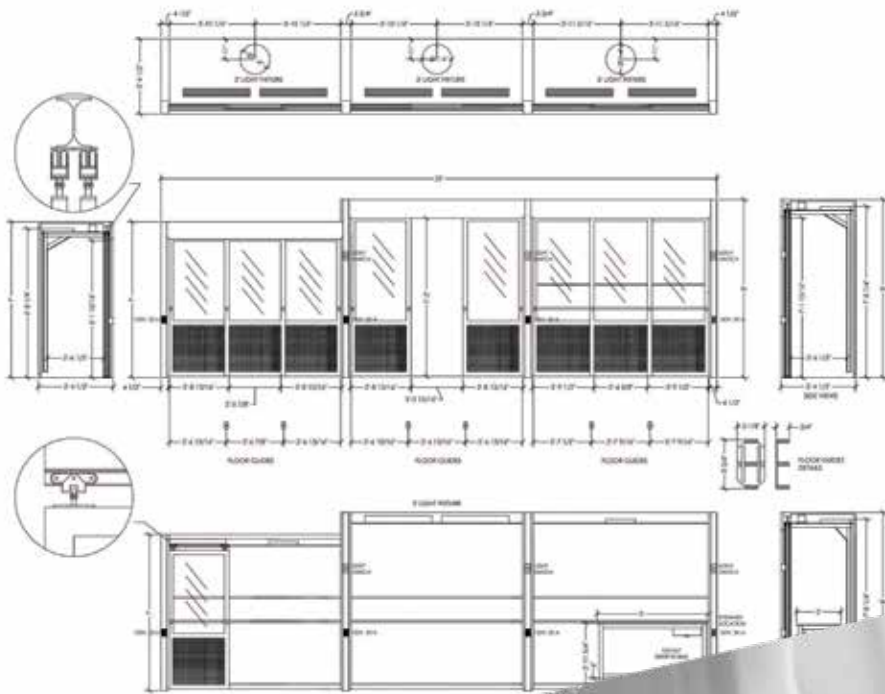
## 14 Fume Hoods Made-To-Order



- Doors move on a hanging trolley system. Allowing for easy movement of apparatus in and out of hood.
- Liners available are phenolic resin, stainless steel and or poly resin.



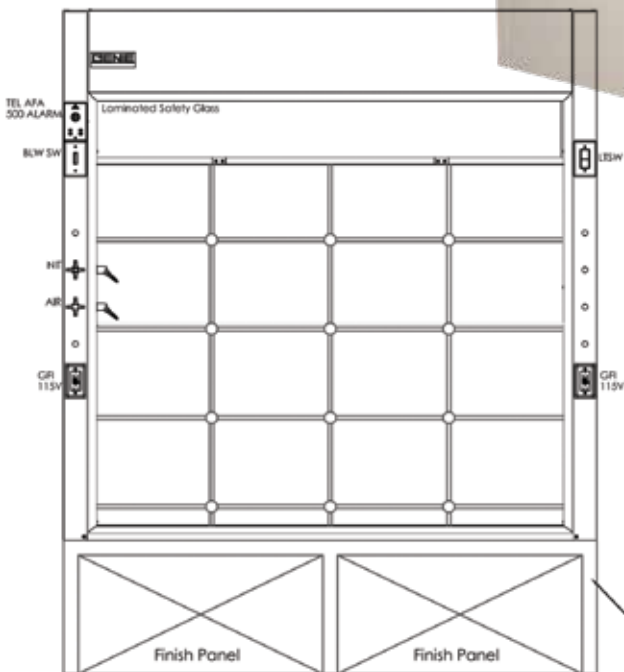




70% OF OUR CUSTOMERS ARE REFERRALS AND RETURNING CLIENTS

EASY  
MOUNTING OF  
APPARATUS

Upgraded phenolic resin liner,  
allows for easy mounting and  
attachment of accessories.





Exhaust hood made to fit client's apparatus.







A hardworking, great looking lab. An example of modular components of tables, mobile cabinets and overhead shelving.



A walk in hood with a white phenolic liner.  
Customization to your needed size is our specialty.









The California Institute for Telecommunications and information Technology known as Calit2 - is a two-campus multidisciplinary research institute located at University California Irvine.





Providing radio chemical compounds to support scientific research.





Cabinets powder coated silver, outfit this stunning and elegant cosmetics lab. Everything is organized and in its place providing a exceptional workplace.





The added tall storage cabinetry that lines the walls provides ample storage for this working lab.



Provivi is biotechnology endorsed by Jane Goodall and her institute.  
Leading the effort to revolutionize the foundation of pest control.  
Safe guarding the natural ecosystem. For farmers and consumers alike,  
utilizing pheromone pest green earth control.



A leader in the study and production of botanically - derived terpenes.  
Exhaust hoods custom made to fit apparatus and provide  
safety for their chemists who extract C1/C1 plant oil.





Analytical testing labs.





Genie custom designed and manufactured mobile cabinetry for the scientific instrumentation manufacturer Perkin Elmer.

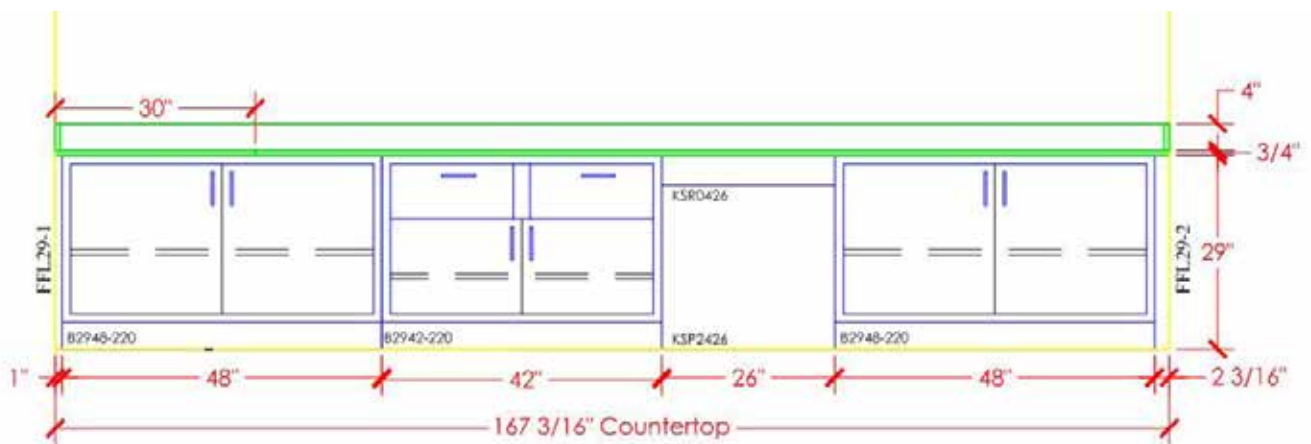


- Increases user protection while testing.
- Reduces total energy cost.
- Saves up to 40% on exhaust air.



Powder coated black steel laboratory furniture and gray uppers outfit this beverage development and flavoring lab.





**J.1** Elevation  
Room - 136







**ChemTough™** The most durable general purpose fume hood liner on the market comes as the standard option on Genie hoods.



**PowerLink™** Robust chain and sprocket sash counter balance a system that will never fail, we guarantee it!



**SlideSafe™** Horizontal sliding doors that hang from a heavy-duty iBeam via rugged jump proof carriers for enhanced ease of use and safety. No more worrying about broken or gunked-up lower track wheels.



**SpillSafe™** Fume hood work surfaces are dished to safely contain spills inside the hood.



**AirDirect™** Bench top and distillation hoods are fitted with an aerodynamic airfoil to direct air across the work surface ensuring floor sweep for safe operation.



**DirectConnect™** All our hoods are fitted with a simple round exhaust collar for connection to building HVAC. No complicated or expensive ductwork transition pieces needed, just a simple round connection.



**OTHERS**

Cables and plastic rolls.



**GENIE SCIENTIFIC**

- Robust chain
- Heavy duty components
- Safety is priority number one





About Us.

**SELL + WORK DIRECTLY WITH:**

- Owners & End Users
- Architects
- General Contractors
- Facility Services
- Government Agencies
- Developers
- Resellers

## WHAT MAKES US DIFFERENT?

- **EXPERIENCED HOUSE TEAM:** Design, engineering, manufacturing, estimating & drafting
- **DESIGN + LAYOUT:** Assist on designing proper layouts + space planning
- **DETAILED SUBMITTALS:** Clear understanding of what you are ordering & receiving
- **PROJECT MANAGEMENT:** Dedication to project management; you'll know where your projects are every step of the way
- **SKILLED INSTALLATION CREW:** Get it done right, fast and on time.
- **MANUFACTURING DIRECT:** Fume Hoods & Steel Products
- **GENIE IS ALSO A DEALER:** Genie OEM nationwide data base of suppliers custom tailoring complete packages to get you what you need when you need it, on time and on budget

### **Installation: Licensed, Insured & Bonded**

Experienced install crews that can perform on any job site.  
Ability to perform union, non-union & prevailing wage installations.

**License #:** 663769

**Bond #:** SC6003262

**Public Works Contractor Registration # (DIR):** 1000019140

-Since 1976-







Genie Scientific, Inc.

800.545.8816 p 714.545.1838 f 714.641.0496

17430 Mt. Cliffwood Circle, Fountain Valley, CA 92708

www.geniescientific.com

V8 - 3\_20

WOMEN  
OWNED™



@geniescientific.com